

# Grasso FX PP 2x1100 /sDuo

## Specifications

Brand	Grasso
Type	FX PP 2x1100 /sDuo
Product type	Water Cooled Chiller
Capacity kW	2054
Capacity Tons	584,0
Refrigerant	NH 3 (ammonia)
Refrigerant Type	R 717
Weight in kg.	13.400
Sizes	4500x2450x2200 mm 3600x1900x2000 mm
Compressor(s) type & model	2x Grasso R-2
Remarks	y.o.b. 2000



## Description

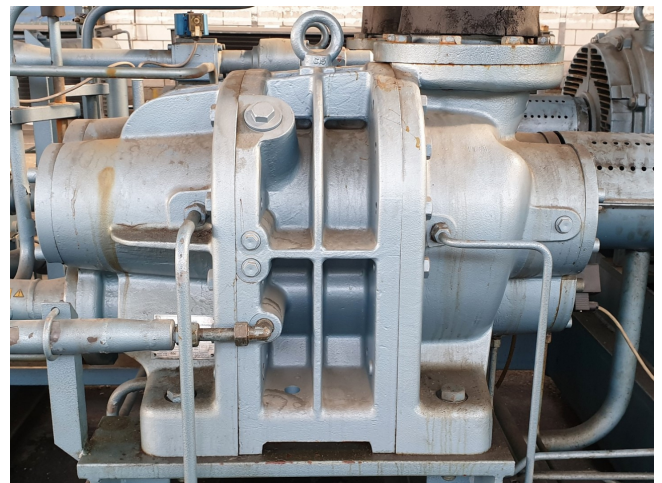
### Used Grasso FX PP 2x1100 /sDuo

Used GEA/Grasso FX PP 2x1100 /sDuo chiller containing the following elements: (2x) Grasso R-2 screw compressor, (2x) Schorch electromotor 50 Hz - 250 kW - 2975 RPM. Oil separator 575 ltr. Thermowave TL 250 KDGL PHE oil cooler. Control panel with GEA GSC controlling. Evaporator Thermowave TL 650 KCIL, condenser Thermowave TL 650 KDIL.

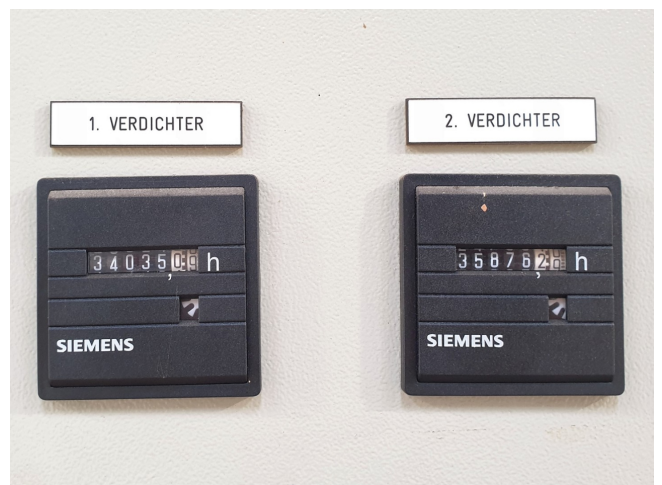
\*All components of this used chiller will be tested on good working, leak free condition (condensing blocks), compressors, fans, control panel, etcetera). Choosing HOSBV means buying with warranty. We perform a industrial cleaning and rust spots will be covered. Also, we can arrange your shipment



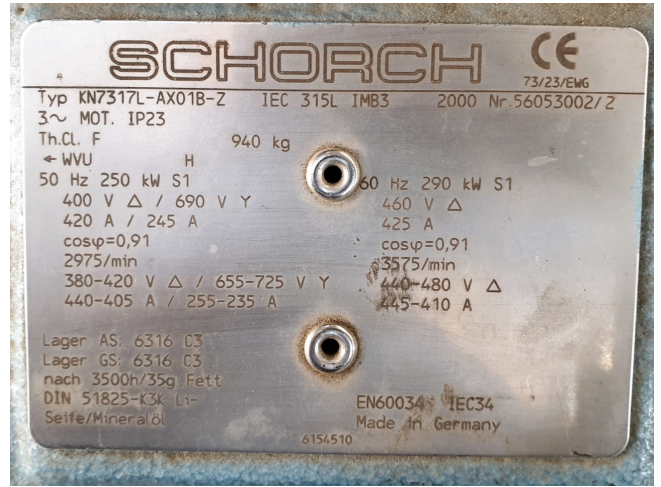
<b>GEA</b>		<b>Grasso GmbH</b>	
Geschäftsbereich Kältetechnik		Refrigeration Technology	
Holzhauser Str. 165		D-13509 Berlin	
Typ/Type/Type	FX PP2x1100/sDuo	Serien-Nr./Serial-No./N° de série	359
Herstellerjahr/Built in/Ann. constr.	2000	Leergewicht/Weight empty/Poids à vide	13400kg
Kältemittel/Refrigerant/Frigorigène	NH <sub>3</sub>	Kältemittel-Füllmenge/Filling with Refrigerant/Rempl. avec fluide frigor.	kg
zulässiger Druck/Max working pressure/Surpression service adm.	Hochdruckseite/High pressure side/Côté refoulement	24	bar
	Niederdruckseite/Low pressure side/Côté aspiration	16	bar



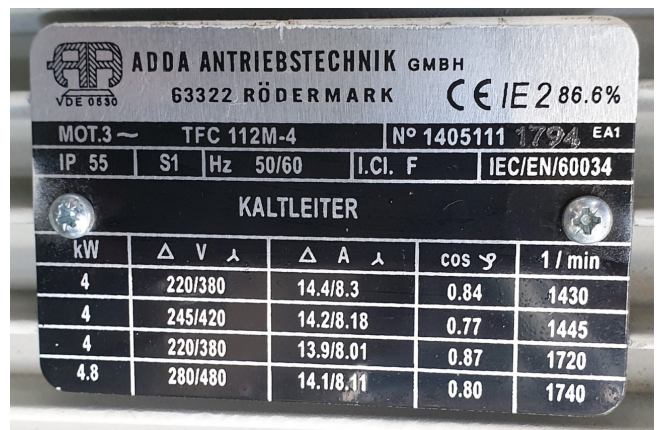
<b>GEA</b>		<b>Grasso GmbH</b>	
Refrigeration Technology		Refrigeration Technology	
Holzhauser Str. 165		D-13509 Berlin	
Typ/Type/Type	R-2	Serien-Nr./Serial No./N° de série	R0381/420559
		Baujahr/Built in/An.constr.	R06
zulässiger Druck/Allowable pressure/Pression admissible	28	bar	Vol.Verhältnis/Vol. Ratio/Rapp. vol.
			3,6
geom. Volumen/Geometric volume/Vol. géométrique	5896	cm <sup>3</sup> /U/cm <sup>3</sup> /rot	max. Drehz./Max. speed/Max. vitesse
			3600
		1/min/rpm/tr/min	
Leergewicht/Weight empty/Poids à vide	806	kg	Arbeitsmedium/Working fluid/Fluide utilisé
			Kältemittel/Refrigerant/Frigorigène



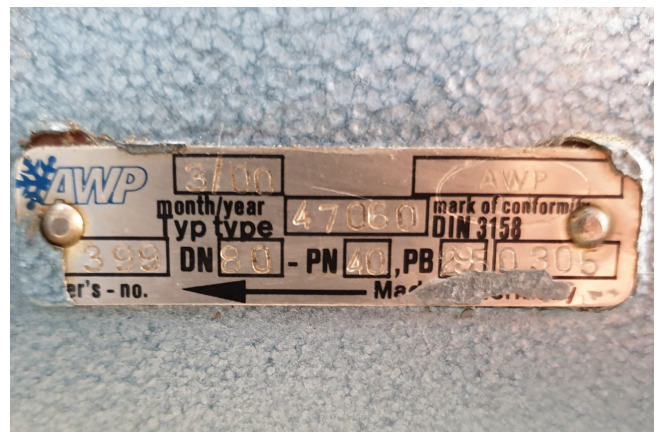






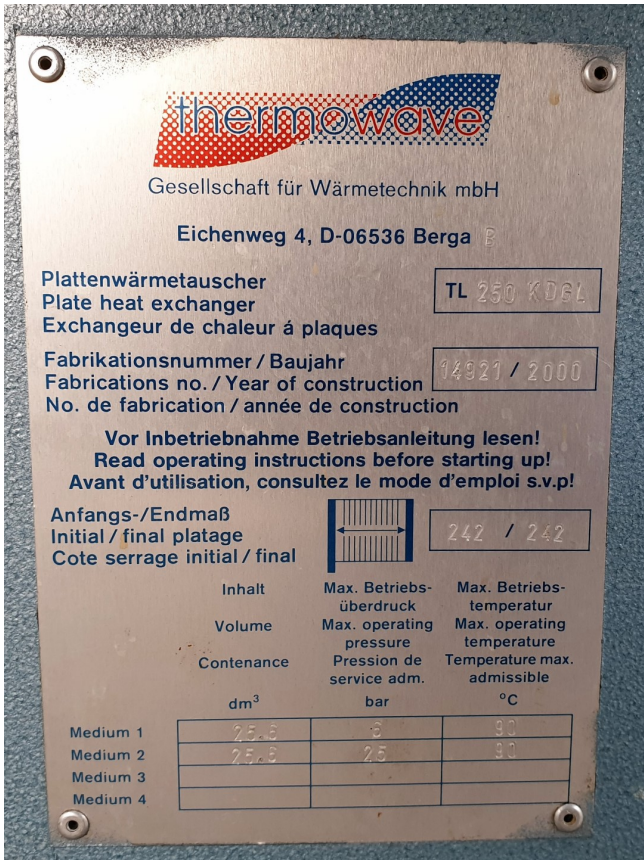


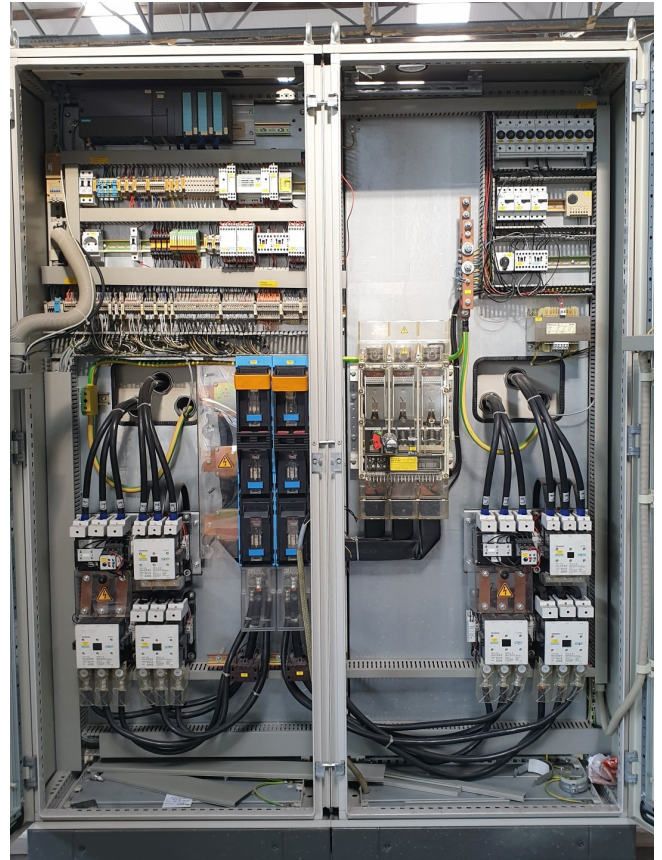



















Gesellschaft für Wärmetechnik mbH

Eichenweg 4, D-06536 Berga AR

Plattenwärmetauscher  
Plate heat exchanger  
Exchangeur de chaleur à plaques

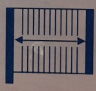
TL650KD1L

Fabrikationsnummer / Baujahr  
Fabrications no. / Year of construction  
No. de fabrication / année de construction

14919 / 2000

**Vor Inbetriebnahme Betriebsanleitung lesen!**  
**Read operating instructions before starting up!**  
**Avant d'utilisation, consultez le mode d'emploi s.v.p!**

Anfangs-/Endmaß  
Initial / final platage  
Cote serrage initial / final



740 / 707

	Inhalt Volume Contenance dm <sup>3</sup>	Max. Betriebs- überdruck Max. operating pressure Pression de service adm. bar	Max. Betriebs- temperatur Max. operating temperature Temperature max. admissible °C
Medium 1	44	6.0	80.0
Medium 2	44	25.0	80.0
Medium 3			
Medium 4			